



Eligible Behavioral and Mental Health Sites for the Health Sciences Service Program Service Obligation

This handbook lists sites which typically qualify for the Health Science Service Program service obligation. The document lists the locations of sites across West Virginia by county. Most Federally qualified health centers, federal and state correctional facilities, free clinics, rural health clinics and school-based health centers will typically qualify for the service obligation. Additional contact information for approved service obligations is available at: <http://www.dhhr.wv.gov/dpc/Pages/default.aspx>. Please note this is a fluid list and designations can change per the US Health Resources & Services Administration.

Disciplines

This handbook is for the following Health Science Service Program disciplines to aid in the search for an eligible service site location: *MD/DO students who are entering residency in West Virginia in psychiatry; Students in the final year of a graduate social work program, leading to a career as a Licensed Independent Clinical Social Worker; Students in the final year of a doctoral clinical psychology program who intend to enter a clinical internship in West Virginia.*

Acronym Definitions

CF – Correctional Facility
FC – Free Clinic

FQHC – Federally Qualified Health Center
RHC – Rural Health Clinic

Sites which are designated as a Federally Qualified Health Center (FQHC), Correctional Facility (CF), Free Clinic (FR) or Rural Health Clinic (RHC) should be approved for the service obligation.

County Health Professions Shortage Area (HPSA) Designation Definitions (all designations are made by the federal government):

Geographic HPSA: Geographic HPSAs have a shortage of services for the entire population within an established geographic area.

Population HPSA: Population HPSAs have a shortage of services for a specific population subset within an established geographic area. Frequently Designated Population HPSAs include:

- Medicaid eligible
- Low income
- Migrant farmworker
- Native American/Alaskan Native
- People experiencing homelessness

Facility HPSAs: Facility HPSAs include three categories:

- **Other Facility (OFAC):** Public or non-profit private medical facilities serving a population or geographic area designated as a HPSA with a shortage of health providers.
- **Correctional Facility:** Medium to maximum-security federal and state correctional institutions and youth detention facilities with a shortage of health providers.

- **State Mental Hospitals:** State or county hospitals with a shortage of psychiatric professionals (mental health designations only).

Automatic Facility HPSAs (Auto-HPSAs): Some facilities do not have to apply for a designation. They are automatically designated as HPSAs by statute or through regulation. These include:

- **Federally Qualified Health Centers (FQHCs)**
Health centers that:
 - Provide care to an underserved area or population
 - Offer a sliding fee scale
 - Provide comprehensive services
 - Have an ongoing quality assurance program; and
 - Have a governing board of directors.

All organizations receiving grants under Health Center Program Section 330 of the Public Health Service Act are FQHCs.

- **FQHC Look-A-Likes (LALs)**
Community-based health care providers that meet the requirements of the HRSA Health Center Program, but do not receive Health Center Program funding.
- **Indian Health Facilities**
Federal Indian Health Service (**IHS**), tribally run, and Urban Indian health clinics that provide medical services to members of federally recognized tribes and Alaska Natives.
- **IHS and Tribal Hospitals**
Federal Indian Health Service (**IHS**) and tribally run hospitals that provide inpatient and outpatient medical services to members of federally recognized tribes and Alaska Natives.
- **Dual-funded Community Health Centers/Tribal Clinics**
Health centers that receive funding from tribal entities and HRSA to provide medical services to members of federally recognized tribes and Alaska Natives.
- **CMS-Certified Rural Health Clinics (RHCs) that meet National Health Service Corps (NHSC) site requirements**
Outpatient clinics located in non-urbanized areas which CMS certifies as RHCs and meet NHSC Site requirements including accepting Medicaid, CHIP, and providing services on a sliding fee scale.

For more information on how service areas are designated, please review the following:
<https://www.hhs.gov/guidance/document/HPSA-and-muap-shortage-designation-types>

Site Criteria for HSSP Service Obligation

To be an eligible site for the Health Science Service Program, the majority of patients served must fall into the one or more of the above listed designations definitions for eligible sites.

Geographic HPSA

Most sites located in counties designated as a **Geographic HPSA** will qualify for the HSSP service obligation. All service sites must be reviewed prior to being approved. Some areas may be designated as High Needs.

Low Income HPSA

For sites designated as a **Low Income HPSA**, documentation must be submitted showing the majority of patients served meet the designation criteria above. Documentation should be submitted by the site administrator or supervisor to the Health Science Program Administrator at HSSP@wvhepc.edu. Participants additionally must submit a HSSP Service Site Waiver to be reviewed by the Senior Director of Health Sciences. Sites listed in this document are typically approved, regardless of the county designation status.

Not a HPSA

For sites located in counties that are designated as **Not a HPSA County** and are not listed as a FQHC, FC, RHC, CF, documentation must be submitted showing the majority of patients served meet the designations criteria above. Documentation should be submitted by the site administrator or supervisor to the Health Science Program Administrator at HSSP@wvhepc.edu. Participants additionally must submit a HSSP Service Site Waiver to be reviewed by the Senior Director of Health Sciences.

Counties which are not designated as a HPSA may have facilities located within the county which may qualify for the HSSP service obligation. Sites in these counties can be reviewed on a case-by-case basis through the HSSP service waiver process.

New Practice or Lack of Supporting Data

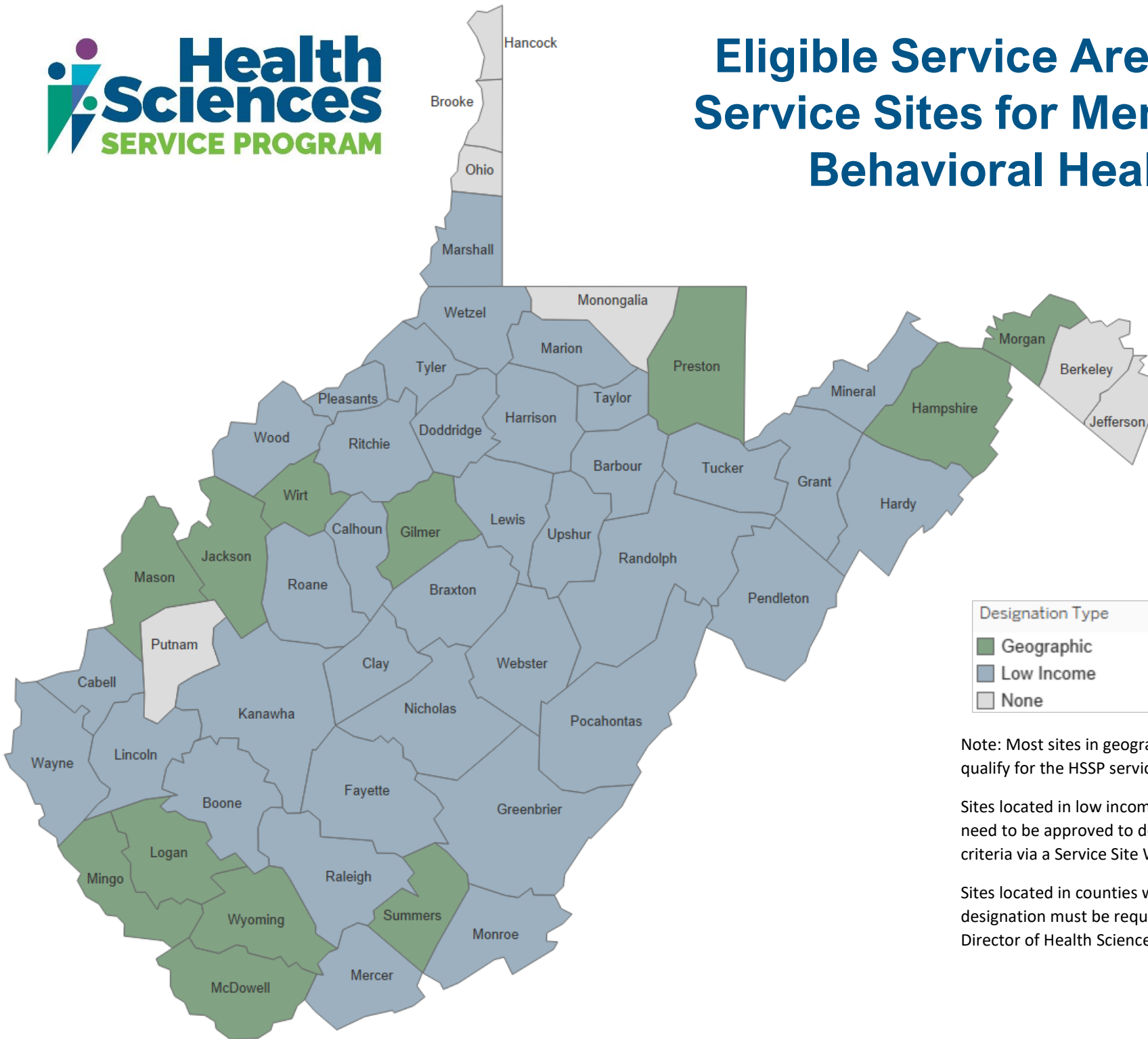
For sites which may be a new practice and do not have sufficient patient data, participants can ask for a deferment for six calendar months to gather patient data and submit at the end of the deferment period. If sufficient data have been collected to show the majority of the patient population meets the criteria, a HSSP Service Site Waiver can be submitted for review of the site.

The information listed on the following pages are sites which typically qualify for the Health Science Service Program service obligation. The document lists the locations of eligible sites across West Virginia by county and includes the site name, site city and site designation. Please note this list is meant to be used as a guidance tool and is not an all-encompassing list. Designation status can change and be updated at any time.

If you have any additional questions about service site locations or the Health Science Service Program, please contact: HSSP@wvhepc.edu.



Eligible Service Areas and Service Sites for Mental and Behavioral Health



Designation Type	
■	Geographic
■	Low Income
■	None

Note: Most sites in geographic designated counties will qualify for the HSSP service obligation.

Sites located in low income designated counties will need to be approved to determine if they meet the criteria via a Service Site Waiver.

Sites located in counties which do not have a HPSA designation must be requested to be approved by the Director of Health Sciences with a Service Site Waiver

Barbour County: HPSA Low Income

<i>Site Name</i>	<i>Site City</i>	<i>Designation Type</i>
ABU Wellness Center	Philippi	FQHC
Belington Medical Clinic	Belington	FQHC
Brandon Wellness Center	Philippi	FQHC
The Myers Clinic	Philippi	FQHC

Berkeley County: Not A HPSA County

<i>Site Name</i>	<i>Site City</i>	<i>Designation Type</i>
Sch Healthy Smiles Dental	Martinsburg	FQHC
Sch Martinsburg	Martinsburg	FQHC
Sch Mobile	Martinsburg	FQHC
Sch Ryan White Administration Support	Martinsburg	FQHC

Boone County: HPSA Low Income

<i>Site Name</i>	<i>Site City</i>	<i>Designation Type</i>
Boone Memorial Hospital Family Medical Center	Madison	RHC
Boone Memorial Hospital Medical Clinic	Madison	RHC
Family Care Health Center - Madison	Madison	FQHC
Raleigh Boone Medical Center	Whitesville	FQHC Look-alike
Sherman Elementary Wellness Center	Comfort	FQHC Look-alike
Sherman Jr/Sr High Wellness Center	Seth	FQHC Look-alike
Southern West Virginia Health System-Madison	Madison	FQHC
Wharton Medical Center	Wharton	FQHC Look-alike

Braxton County: HPSA Low Income

<i>Site Name</i>	<i>Site City</i>	<i>Designation Type</i>
Braxton County High School Wellness Center	Sutton	FQHC
Braxton County Middle School Wellness Center	Sutton	FQHC
Burnsville Elementary School Wellness Center	Burnsville	FQHC
Community Care of Flatwoods	Sutton	FQHC
Community Care of Flatwoods Extension Office	Sutton	FQHC
Community Care of Flatwoods II	Sutton	FQHC
Davis Elementary School Wellness Center	Gassaway	FQHC
Flatwoods Elementary School Wellness Center	Flatwoods	FQHC
Frametown Elementary School Wellness Center	Frametown	FQHC
Little Birch Elementary School Wellness Center	Sutton	FQHC
Sutton Elementary School Wellness Center	Sutton	FQHC

Brooke County: Not A HPSA County

<i>Site Name</i>	<i>Site City</i>	<i>Designation Type</i>
FMC -SBHC Brooke Complex	Wellsburg	FQHC
FMC SBHC Alternative Learning Center	Wellsburg	FQHC

Cabell County: HPSA Low Income

<i>Site Name</i>	<i>Site City</i>	<i>Designation Type</i>
Family Care Health Center - Barboursville	Barboursville	FQHC
Ebenezer Medical Outreach	Huntington	FC
Salt Rock Medical Center	Salt Rock	FQHC
Valley Health - 10th Street	Huntington	FQHC
Valley Health - A Woman's Place	Huntington	FQHC
Valley Health - Cabell Midland High School	Ona	FQHC
Valley Health - Carl Johnson	Huntington	FQHC
Valley Health - East Huntington	Huntington	FQHC
Valley Health - Foodfair Route 60	Barboursville	FQHC
Valley Health - Highlawn	Huntington	FQHC
Valley Health - Huntington	Huntington	FQHC
Valley Health - Huntington High School	Huntington	FQHC
Valley Health - Milton	Milton	FQHC
Valley Health - Otolaryngology	Huntington	FQHC
Valley Health - Southside	Huntington	FQHC
Valley Health - Southside Elementary/Huntington Middle School	Huntington	FQHC
Valley Health- Milton on Hillview	Milton	FQHC

Calhoun County: HPSA Low Income

<i>Site Name</i>	<i>Site City</i>	<i>Designation Type</i>
Calhoun Gilmer Career Center	Grantsville	FQHC
Calhoun Medical/Dental Clinic	Grantsville	FQHC
MHHCC Arnoldsburg School SBHC	Arnoldsburg	FQHC
MHHCC Calhoun Middle/ High SBHC	Mount Zion	FQHC
MHHCC Pleasant Hill School SBHC	Grantsville	FQHC
Minnie Hamilton Health Care Center	Grantsville	FQHC
Minnie Hamilton Health Care Annex	Grantsville	FQHC

Clay County: HPSA Low Income

<i>Site Name</i>	<i>Site City</i>	<i>Designation Type</i>
Big Otter Clinic	Ivydale	FQHC
Big Otter Elementary Wellness Center	Duck	FQHC
Clay Elementary School Wellness Center	Clay	FQHC
Clay High School Wellness Center	Clay	FQHC
Clay Middle School Wellness Center	Clay	FQHC
He White Elementary School Wellness Center	Bomont	FQHC
Lizemore Elementary School Wellness Center	Lizemores	FQHC
Primary Care Systems	Clay	FQHC
Temporary Site - Clay Fitness Center	Clay	FQHC

Doddridge County: HPSA Low Income

<i>Site Name</i>	<i>Site City</i>	<i>Designation Type</i>
Doddridge County Primary Care	West Union	FQHC

Doddridge County: HPSA Low Income (Cont.)

<i>Site Name</i>	<i>Site City</i>	<i>Designation Type</i>
Ritchie Regional Health Center Doddridge High School Campus	West Union	FQHC
Ritchie Regional Health Center Doddridge School Campus	West Union	FQHC

Fayette County: HPSA Low Income

<i>Site Name</i>	<i>Site City</i>	<i>Designation Type</i>
Access Health Fayette Clinic	Lochgelly	FQHC
Ansted Elementary School	Ansted	FQHC
Camden Family Health - Ansted	Ansted	FQHC
Divide Elementary School Wellness Center	Lookout	FQHC
Gauley Bridge Elementary School Wellness Center	Gauley Bridge	FQHC
Lisa Elliott Health Center	Lookout	FQHC
Meadow Bridge Clinic	Meadow Bridge	FQHC
Meadow Bridge Sch. Based Clinic	Meadow Bridge	FQHC
Midland Trail Health Center	Hico	FQHC
Mt. Hope Dental	Mount Hope	FQHC
New River Health - Fayetteville	Fayetteville	FQHC
New River Health - Scarbro	Scarbro	FQHC
New River Health - Smithers	Smithers	FQHC
New River Health - Whipple	Scarbro	FQHC
New River Health Pharmacy - Fayetteville	Fayetteville	FQHC
New River Health SBHC - Fayetteville	Fayetteville	FQHC
New River Health SBHC - Mt. Hope Elementary	Mount Hope	FQHC
New River Health SBHC - New River Intermediate	Oak Hill	FQHC
New River Health SBHC - Oak Hill High School	Oak Hill	FQHC
New River Health SBHC - Valley	Smithers	FQHC
NRHA Mobile Unit 1	Lookout	FQHC
Robinson Annex	Scarbro	FQHC

Gilmer County: HPSA Geographic**Grant County: HPSA Low Income**

<i>Site Name</i>	<i>Site City</i>	<i>Designation Type</i>
Grove Street Health Center	Petersburg	FQHC
Mt. Storm Health Center	Mount Storm	FQHC
Petersburg Elementary School	Petersburg	FQHC
Petersburg High School	Petersburg	FQHC

Greenbrier County: HPSA Low Income

<i>Site Name</i>	<i>Site City</i>	<i>Designation Type</i>
Access health Northern Greenbrier Clinic	Williamsburg	FQHC
Alderson Elementary School Wellness Center	Alderson	FQHC

Greenbrier County: HPSA Low Income (Cont.)

<i>Site Name</i>	<i>Site City</i>	<i>Designation Type</i>
Eastern Greenbrier School Based Health Center	Ronceverte	FQHC
Frankford Elementary School Wellness Center	Frankford	FQHC
Greenbrier County Achievement Center	Lewisburg	FQHC
Greenbrier West High School Clin	Charmco	FQHC
Lewisburg Behavioral Health Center	Lewisburg	FQHC
Lewisburg Elementary School Wellness Center	Lewisburg	FQHC
Lewisburg Health Center	Lewisburg	FQHC
Maxwelton Health Center	Maxwelton	FQHC
Rainelle Dental Clinic	Rainelle	FQHC
Rainelle Elementary School Wellness Center	Rainelle	FQHC
Rainelle Medical Center	Rainelle	FQHC
RMC Greenbrier Nephrology Center	Lewisburg	FQHC
RMC Marvel Center	Rupert	FQHC
Ronceverte Elementary School Wellness Center	Ronceverte	FQHC
Western Greenbrier Middle School	Crawley	FQHC
White Sulphur Springs Elementary School Wellness Center	White Sulphur Springs	FQHC
White Sulphur Springs Health Center	White Sulphur Springs	FQHC

Hampshire County: HPSA Low Income

<i>Site Name</i>	<i>Site City</i>	<i>Designation Type</i>
E.A. Hawse Health Center, Inc. Romney	Romney	FQHC
Hampshire High School	Romney	FQHC
Romney Elementary School	Romney	FQHC
Romney Middle School	Romney	FQHC

Hancock County: Not A HPSA County

<i>Site Name</i>	<i>Site City</i>	<i>Designation Type</i>
Change, Inc. Administration	Weirton	FQHC
Family Medical Care Community Health Center - Hancock County	Weirton	FQHC
Family Medical Care Community Health Center - Newell	Newell	FQHC
FMC - SBHC Oak Glen Complex	New Cumberland	FQHC
FMC - SBHC Weir Complex	Weirton	FQHC
FMC Mat	Weirton	FQHC
FMC SBHC - Weirton Elementary	Weirton	FQHC

Hardy County: HPSA Low Income

<i>Site Name</i>	<i>Site City</i>	<i>Designation Type</i>
E. A. Hawse Health Center Inc.	Baker	FQHC
E.A. Hawse Health Center, Inc.	Mathias	FQHC
E.A. Hawse Health Center, Inc. Moorefield	Moorefield	FQHC
E.A. Hawse Health Center, Inc. Wardensville	Wardensville	FQHC
East Hardy Early Middle School	Baker	FQHC
East Hardy High School	Baker	FQHC
Moorefield Elementary School	Moorefield	FQHC

Hardy County: HPSA Low Income (Cont.)

<i>Site Name</i>	<i>Site City</i>	<i>Designation Type</i>
Moorefield High School	Moorefield	FQHC
Moorefield Intermediate School	Moorefield	FQHC
Moorefield Middle School	Moorefield	FQHC
Potomac Valley Family Medicine	Moorefield	FQHC

Harrison County: HPSA Low Income

<i>Site Name</i>	<i>Site City</i>	<i>Designation Type</i>
Adamston Elementary School Wellness Center	Clarksburg	FQHC
Alternative Learning Center School Wellness Center	Clarksburg	FQHC
Big Elm Elementary School Wellness Center	Shinnston	FQHC
Bridgeport High School Wellness Center	Bridgeport	FQHC
Bridgeport Middle School Wellness Center	Bridgeport	FQHC
Community Care of Bridgeport	Bridgeport	FQHC
Community Care of Clarksburg	Clarksburg	FQHC
Health access	Clarksburg	FC
Johnson Elementary School Wellness Center	Bridgeport	FQHC
Liberty High School Wellness Center	Clarksburg	FQHC
Lincoln Middle and High School Wellness Center	Shinnston	FQHC
Lost Creek Elementary School Wellness Center	Lost Creek	FQHC
Lumberport Elementary School Wellness Center	Lumberport	FQHC
Mountaineer Middle School Wellness Center	Clarksburg	FQHC
Mva Health Center - Shinnston	Shinnston	FQHC
North View Elementary School Wellness Center	Clarksburg	FQHC
Norwood Elementary School Wellness Center	Stonewood	FQHC
Nutter Fort Intermediate School Wellness Center	Nutter Fort	FQHC
Nutter Fort Primary School Wellness Center	Nutter Fort	FQHC
Robert C Byrd High School Wellness Center	Clarksburg	FQHC
Salem Elementary School Wellness Center	Salem	FQHC
Simpson Elementary School Wellness Center	Bridgeport	FQHC
South Harrison High School Wellness Center	Lost Creek	FQHC
South Harrison Middle School Wellness Center	Lost Creek	FQHC
United Technical Center Wellness Center	Clarksburg	FQHC
Washington Irving Middle School Wellness Center	Clarksburg	FQHC
West Milford Community Hilt Ctr	West Milford	FQHC
West Milford Elementary School Wellness Center	West Milford	FQHC
Wilsonburg Elementary School Wellness Center	Clarksburg	FQHC

Jackson County: HPSA Low Income

<i>Site Name</i>	<i>Site City</i>	<i>Designation Type</i>
Jackson County School Based Wellness Center	Ripley	FQHC
Ripley Family Care	Ripley	FQHC
River Valley Family Care	Ravenswood	FQHC

Jefferson County: HPSA No

<i>Site Name</i>	<i>Site City</i>	<i>Designation Type</i>
Eastern Panhandle Free Clinic	Charles Town	FC
Family Medical Care Community Health Center - Jefferson County	Wintersville	FQHC
Sch Behavioral Health	Charles Town	FQHC

Kanawha County: HPSA Low Income

<i>Site Name</i>	<i>Site City</i>	<i>Designation Type</i>
Cabin Creek Health Administration	Eskdale	FQHC
Cabin Creek Health Center, Inc.	Dawes	FQHC
Cabin Creek Health Administration	Charleston	FQHC
Clendenin Health Center	Clendenin	FQHC
Cubs Wellness Center/Sharon Dawes Elementary	Miami	FQHC
Elk River Health Center	Elkview	FQHC
Family Care Health Center - Children's Medicine Center	Charleston	FQHC
Family Care Health Center - Cross Lanes	Cross Lanes	FQHC
Family Care Health Center - Mary C. Snow West Side Elementary	Charleston	FQHC
Family Care Health Center - Ob/Gyn & Birth Center	Charleston	FQHC
Family Care Health Center - Patrick Street	Charleston	FQHC
Family Care Health Center - St. Albans	Saint Albans	FQHC
Family Care Health Center - West Virginia State University	Dunbar	FQHC
Family Care Health Center SBHC - Capital High School	Charleston	FQHC
Family Care Health Center SBHC - Stonewall Jackson Middle	Charleston	FQHC
Herbert Hoover Health Center	Clendenin	FQHC
Hygeia Facilities Foundation, Inc.	Charleston	FQHC Look-alike
Indian Health Center	Charleston	FQHC
Kanawha City Health Center	Charleston	FQHC
Mobile Unit#1	Charleston	FQHC
Pcc And Distribution Center	Saint Albans	FQHC
Pioneer Health Center	East Bank	FQHC
Recovery Point of Charleston	Charleston	FQHC
Riverside Health Center	Belle	FQHC
Sissonville Health Center	Charleston	FQHC
Southern West Virginia Health System	Charleston	FQHC
Sunnyside Health Center	Charleston	FQHC
Valley Health - Upper Kanawha	Cedar Grove	FQHC
Valley Health- Kidcare	Charleston	FQHC
Valley Health- Oakwood Road	Charleston	FQHC
Wv Health Right	Charleston	FC

Lewis County: HPSA Low Income

<i>Site Name</i>	<i>Site City</i>	<i>Designation Type</i>
Camden Family Health	Weston	FQHC
Community Care of Weston	Weston	FQHC
Community Care of Weston II	Weston	FQHC
Jane Lew Elementary School Wellness Center	Jane Lew	FQHC
Leading Creek Elementary School Wellness Center	Linn	FQHC

Lewis County: HPSA Low Income (Cont.)

<i>Site Name</i>	<i>Site City</i>	<i>Designation Type</i>
Peterson-Central Elementary School Wellness Center	Weston	FQHC
Roanoke Elementary School Wellness Center	Roanoke	FQHC
Robert Bland Middle School Wellness Center	Weston	FQHC

Lincoln County: HPSA Low Income

<i>Site Name</i>	<i>Site City</i>	<i>Designation Type</i>
Dennis' Pharmacy	Hamlin	FQHC
Downtown Brewer Building	Hamlin	FQHC
Downtown Hamlin Old Town Hall Rental	Hamlin	FQHC
Downtown Turley Building	Hamlin	FQHC
Duval Middle School Health Center	Griffithsville	FQHC
Guyan Valley Wellness Center	Branchland	FQHC
LCHS Panther Center for Health	Hamlin	FQHC
Lincoln Co. Primary Care Center, Inc. - Billing Office	Hamlin	FQHC
Lincoln County Primary Care Center, Inc.	Hamlin	FQHC
Lincoln Sundry Offices	Hamlin	FQHC
Mustang Health Center	Alum Creek	FQHC
Ranger Health Center	Ranger	FQHC
Valley Health - Harts	Harts	FQHC
Valley Health - Harts Intermediate School	Harts	FQHC

Logan County: HPSA Geographic (High Needs)**Marion County: HPSA Low Income**

<i>Site Name</i>	<i>Site City</i>	<i>Designation Type</i>
Monongahela Valley Association of Health Centers, Inc.	Fairmont	FQHC
Mva Health Center - East Fairmont High School Wellness Center	Fairmont	FQHC
Mva Health Center - East Fairmont Middle School Wellness Center	Fairmont	FQHC
Mva Health Center - Fairmont	Fairmont	FQHC
Mva Health Center - Mannington	Mannington	FQHC
Mva Health Center - North Marion High School Wellness Center	Farmington	FQHC
Mva Health Center - Pediatrics	Fairmont	FQHC
Mva Health Center - West Fairmont Middle School Wellness Center	Fairmont	FQHC
Mva Health Center: Monongah Elementary School Wellness Center	Monongah	FQHC
Mva Health Center: Monongah Middle School Wellness Center	Monongah	FQHC

Marshall County: HPSA Low Income

<i>Site Name</i>	<i>Site City</i>	<i>Designation Type</i>
Northern CF	Moundsville	CF

Mason County: HPSA Geographic

McDowell County: HPSA Geographic (High Needs)

Mercer County: HPSA Low Income

<i>Site Name</i>	<i>Site City</i>	<i>Designation Type</i>
Access Health Princeton	Princeton	FQHC
Athens Elementary School Wellness Center	Athens	FQHC
Bluefield Intermediate School Wellness Center	Bluefield	FQHC
Bluestone Family Practice	Bluefield	FQHC
Bluestone Health Association Inc. _Bluestone Health Center	Princeton	FQHC
Bluestone Health Center Administrative Site	Princeton	FQHC
Bluestone Medical Center	Princeton	FQHC
Bluestone Primary Care	Princeton	FQHC
Memorial Primary School Wellness Center	Bluefield	FQHC
Mercer Charitable Clinic	Bluefield	FC
Princeton Primary School Wellness Center	Princeton	FQHC
Prudich Medical Center	Montcalm	FQHC
Tug River Health –Princeton	Princeton	FQHC
Whitethorn Elementary School Wellness Center	Bluefield	FQHC

Mineral County: HPSA Low Income

Mingo County: HPSA Geographic (High Needs)

<i>Site Name</i>	<i>Site City</i>	<i>Designation Type</i>
Family Healthcare Associates	Gilbert	RHC
Gilbert Health Center	Gilbert	FQHC
Logan Mingo Area Mental Health, Inc.	Williamson	FQHC Look-alike
Southern West Virginia Health System - Delbarton	Delbarton	FQHC
Southern West Virginia Health System-Gilbert	Gilbert	FQHC
WHWC Administration Office	Williamson	FQHC
WHWC Sud Clinic	Williamson	FQHC
Williamson Dental Clinic	Williamson	FQHC
Williamson Health and Wellness Center	Williamson	FQHC
Williamson Health and Wellness Center	Williamson	FQHC
Williamson Health and Wellness Center - Downstairs	Williamson	FQHC
Williamson Health and Wellness Center - WMH	Williamson	FQHC
Williamson Health and Wellness Center Administration	Williamson	FQHC

Monongalia County: Not A HPSA County

<i>Site Name</i>	<i>Site City</i>	<i>Designation Type</i>
Clay-Battelle Community Health Center	Blacksville	FQHC
FCI - Morgantown	Morgantown	CF
Milan Puskar Health Right	Morgantown	FC

Monroe County: HPSA Low Income

<i>Site Name</i>	<i>Site City</i>	<i>Designation Type</i>
Alderson Medical Center	Alderson	FQHC
James Monroe Wellness Center	Lindside	FQHC
Kilcollin Dental	Union	FQHC
Monroe County Health Center	Union	FQHC
Monroe Health Center-Peterstown	Peterstown	FQHC
Mountain View Wellness Center	Union	FQHC
Peterstown Wellness Center	Peterstown	FQHC
Temporary Site - Church of God – Fellowship Center	Union	FQHC

Morgan County: HPSA Geographic**Nicholas County: HPSA Low Income**

<i>Site Name</i>	<i>Site City</i>	<i>Designation Type</i>
Camden Family Health	Craigsville	FQHC
Camden Family Health	Richwood	FQHC
Camden Family Health	Summersville	FQHC
Camden Family Health - Cherry River	Richwood	FQHC
Camden Family Health - Little Beaver Creek	Craigsville	FQHC
Camden Family Health - Panther Creek	Nettie	FQHC
Camden Family Health - Red Oak Drive	Craigsville	FQHC
Camden Family Health - Summersville Elementary School	Summersville	FQHC
New River Health - Summersville	Summersville	FQHC
New River Health SBHC - Summersville	Summersville	FQHC

Ohio County: Not A HPSA County

<i>Site Name</i>	<i>Site City</i>	<i>Designation Type</i>
Wheeling Health Right Center	Wheeling	FC / FQHC

Pendleton County: HPSA Low Income

<i>Site Name</i>	<i>Site City</i>	<i>Designation Type</i>
Brandywine Elementary School	Brandywine	FQHC
Franklin School Based Health Clinic	Franklin	FQHC
North Fork Elementary School	Circleville	FQHC
North Fork Primary Care	Riverton	FQHC
Pendleton Community Care Clinic	Franklin	FQHC
Pendleton County High School	Franklin	FQHC

Pleasants County: HPSA Low Income

<i>Site Name</i>	<i>Site City</i>	<i>Designation Type</i>
Saint Mary's Sub-Regional Clinic	Saint Marys	Indian Health Service, Tribal Health, & Urban Indian Health Org.
St. Marys High School	Saint Marys	FQHC

Pocahontas County: HPSA Geographic

<i>Site Name</i>	<i>Site City</i>	<i>Designation Type</i>
Community Care of Green Bank	Green Bank	FQHC
Community Care of Marlinton	Marlinton	FQHC
Community Dental Care of Green Bank	Green Bank	FQHC
Green Bank Elementary-Middle School Wellness Center	Green Bank	FQHC
Hillsboro Elementary School Wellness Center	Hillsboro	FQHC
Hillsboro Health Center	Hillsboro	FQHC
Marlinton Elementary School Wellness Center	Marlinton	FQHC
Marlinton Middle School Wellness Center	Buckeye	FQHC
Pocahontas County High School Wellness Center	Dunmore	FQHC
Pocahontas Memorial Hospital Rural Health Clinic	Buckeye	RHC

Preston County: HPSA Geographic**Putnam County: Not A HPSA County**

<i>Site Name</i>	<i>Site City</i>	<i>Designation Type</i>
Family Care Health Center - Eleanor	Eleanor	FQHC
Family Care Health Center - Teays Valley	Scott Depot	FQHC
Mobile Medical Unit	Eleanor	FQHC
Womencare Women's Health & Birthcenter	Hurricane	FQHC
Valley Health - Hurricane	Hurricane	FQHC
Valley Health - Teays Valley	Hurricane	FQHC
Valley Health- Teays Pediatrics	Scott Depot	FQHC
Family Care Health Center - Putnam Career & Technical Center	Eleanor	FQHC
Family Care Health Center SBHC - Winfield Middle School	Winfield	FQHC
Family Care Health Center SBHC - Buffalo Elementary School	Buffalo	FQHC
Family Care Health Center SBHC - George Washington Middle School	Eleanor	FQHC
Family Care Health Center SBHC - Winfield Elementary	Winfield	FQHC
Family Care Health Center SBHC - Winfield High School	Winfield	FQHC
Family Care Health Center SBHC - George Washington Elementary	Eleanor	FQHC

Raleigh County: HPSA Low Income

<i>Site Name</i>	<i>Site City</i>	<i>Designation Type</i>
Access health Clear Fork School-Based Clinic	Artie	FQHC
Access health Associates	Beckley	FQHC

Raleigh County: HPSA Low Income (Cont.)

<i>Site Name</i>	<i>Site City</i>	<i>Designation Type</i>
Access health Beckley	Beckley	FQHC
Access health Cranberry Prosperity School-Based Clinic	Beckley	FQHC
Access health Daniels Clinic	Daniels	FQHC
Access health Daniels Elementary School-Based Clinic	Daniels	FQHC
Access health Glen Daniels Clinic	Glen Daniel	FQHC
Access health Mabscott Clinic	Beckley	FQHC
Access health Mabscott Elementary School-Based Clinic	Beckley	FQHC
Access health Marsh Fork Elementary School-Based Clinic	Rock Creek	FQHC
Access health PMU	Beckley	FQHC
Access health Professional Park Clinic	Beckley	FQHC
Access health Raleigh Psychiatric Services	Beckley	FQHC
Access health Rural Acres Clinic	Beckley	FQHC
Access health Shady Spring High School-Based Clinic	Shady Spring	FQHC
Access health Stanaford Clinic	Beckley	FQHC
Beckley Health Right	Beckley	FC
Beckley Stratton School-Based Clinic	Beckley	FQHC
Community Health Systems	Beckley	FQHC
Community Health Systems, Inc Administrative	Beckley	FQHC
FCI - Beckley	Beaver	CF
New River Health - Sophia	Sophia	FQHC
New River Health SBHC - Coal City Elementary	Coal City	FQHC
New River Health SBHC - Independence High School	Coal City	FQHC
New River Health SBHC - Independence Middle School	Slab Fork	FQHC
Pressley Ridge School	Crab Orchard	FQHC
Woodrow Wilson School-Based Clinic	Beckley	FQHC
Woodrow Wilson/ Act Wellness Center	Beckley	FQHC

Randolph County: HPSA Low Income

<i>Site Name</i>	<i>Site City</i>	<i>Designation Type</i>
Elkins High School	Elkins	FQHC
Elkins Middle School	Elkins	FQHC
Elkins Mountain School	Elkins	FQHC
Elkins Third Ward Elementary School	Elkins	FQHC
George Ward Elementary School	Mill Creek	FQHC
Harman Health Center	Harman	FQHC
Huttonsville Correctional Center	Huttonsville	CF
Jennings Randolph Elementary School	Elkins	FQHC
Little Meadow Health Center	Helvetia	FQHC
Midland Elementary School	Elkins	FQHC
North Elementary School	Elkins	FQHC
Tygarts Valley Middle/High School	Mill Creek	FQHC
Valley Health Care Elkins - Health Center	Elkins	FQHC
Valley Health Care Elkins - Pharmacy	Elkins	FQHC
Valley Health Care, Inc	Mill Creek	FQHC

Ritchie County: HPSA Low Income

<i>Site Name</i>	<i>Site City</i>	<i>Designation Type</i>
Ritchie County Primary Care Association, Ritchie County School Health Ctr	Harrisville Ellenboro	FQHC FQHC

Roane County: HPSA Low Income

<i>Site Name</i>	<i>Site City</i>	<i>Designation Type</i>
Roane Family Health Care	Spencer	FQHC
Roane General Medical Associates	Spencer	RHC
Southern Roane Medical Clinic	Left Hand	RHC
Roane General Medical Center	Spencer	RHC

Summers County: HPSA Geographic (High Needs)**Taylor County: HPSA Low Income**

<i>Site Name</i>	<i>Site City</i>	<i>Designation Type</i>
Dental Center of Taylor County	Grafton	FQHC
Preston-Taylor Community Health	Grafton	FQHC
Tygart Valley Total Care Center	Grafton	RHC

Tucker County: HPSA Low Income

<i>Site Name</i>	<i>Site City</i>	<i>Designation Type</i>
St. George Medical Clinic, Inc.	Parsons	FQHC
St. George Medical Clinic, Inc. - Dental Clinic	Hambleton	FQHC
Mountaintop Health Center	Thomas	FQHC
St. George Clinic Pharmacy	Parsons	FQHC
St. George Medical Clinic School-Based Health Center	Hambleton	FQHC

Tyler County: HPSA Low Income

<i>Site Name</i>	<i>Site City</i>	<i>Designation Type</i>
Sistersville General Hospital RHC	Sistersville	RHC

Upshur County: HPSA Low Income

<i>Site Name</i>	<i>Site City</i>	<i>Designation Type</i>
Buckhannon Academy Elementary School Wellness Center	Buckhannon	FQHC
Buckhannon-Upshur High School Wellness Center	Buckhannon	FQHC
Buckhannon-Upshur Middle School Wellness Center	Buckhannon	FQHC
Care Xpress and Pediatrics of Buckhannon	Buckhannon	FQHC
Community Care Connections of Buckhannon	Buckhannon	FQHC
Community Care of Buckhannon	Buckhannon	FQHC
French Creek Elementary School Wellness Center	French Creek	FQHC

Upshur County: HPSA Low Income (Cont.)

<i>Site Name</i>	<i>Site City</i>	<i>Designation Type</i>
Tri-County Health Clinic	Rock Cave	FQHC
Union Elementary School Wellness Center	Buckhannon	FQHC
Upshur County Pals Wellness Center	Buckhannon	FQHC
Washington District Elementary School Wellness Center	Buckhannon	FQHC
West Virginia Wesleyan College Wellness Center	Buckhannon	FQHC

Wayne County: HPSA Low Income

<i>Site Name</i>	<i>Site City</i>	<i>Designation Type</i>
Valley Health - Fort Gay	Fort Gay	FQHC
Valley Health - Steeptown	Kermit	FQHC
Valley Health - Wayne	Wayne	FQHC
Valley Health - Westmoreland	Huntington	FQHC
Valley Health - Spring Valley High School	Huntington	FQHC
Valley Health - Wayne High School	Wayne	FQHC

Webster County: HPSA Low Income

<i>Site Name</i>	<i>Site City</i>	<i>Designation Type</i>
Camden Family Health - Cowen Office	Cowen	FQHC
Camden-On-Gauley Medical Center	Camden On Gauley	FQHC
Webster County School Based Community Health Center	Upperglade	FQHC

Wetzel County: HPSA Low Income

<i>Site Name</i>	<i>Site City</i>	<i>Designation Type</i>
Chc Of Northeastern Wetzel City	Burton	FQHC

Wirt County: HPSA Geographic (High Needs)**Wood County: HPSA Low Income**

<i>Site Name</i>	<i>Site City</i>	<i>Designation Type</i>
Good Samaritan Clinic	Parkersburg	FC
Parkersburg Family Care	Parkersburg	FQHC
Parkersburg Family Care – Westbrook	Parkersburg	FQHC
Parkersburg Family Care B	Parkersburg	FQHC
Jefferson Health & Wellness Ctr	Parkersburg	FQHC
Parkersburg South High School Health and Wellness Center	Parkersburg	FQHC

Wyoming County: HPSA Geographic (High Needs)

